

Workshops for Team Members

Developmentally Appropriate Practice and You

Learn how to understand the children that you work with. Take a deep dive into the method that will help you recognize each child as an individual.



Incorporating Play into Your Classroom

Play is essential in early childhood education. It helps children develop problem solving and decision-making skills. This workshop helps to explore the necessity of play and how it is truly serious business for young children!



Help! I have a Special Needs Child in my Classroom

This workshop will explore best practices and strategies for teaching early learners with special needs in your classroom.



Characteristics of a Classroom Leader

Every teacher brings their own strengths and unique skills to a school. They encourage others and create new leaders amongst their students and their co-workers. This workshop will focus on the characteristics of a classroom leader and will encourage participants to become reflective practitioners and create a positive culture.



Observing and Recording Children's Behavior



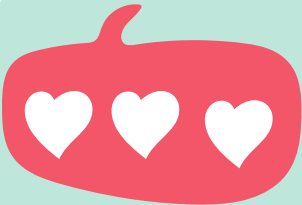
This workshop is designed to help teachers better understand children's behavior. We will outline methods for recordkeeping to paint a realistic picture of each child's interactions and experiences in the classroom.

It's "A Parent" They Are Our Customers

Great customer service is the foundation of any well-run established child care program. It is one thing to know that it starts with administration, but a complete other to have the follow through continue to the classroom. This workshop will help classroom personnel understand the importance of customer service and HOW they can ensure ambassadors of customer service within their classroom.



Languages of Love and Appreciation



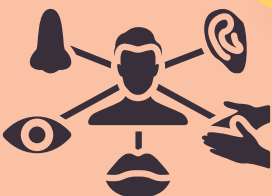
This session will explore the different ways people, young and old experience love and appreciation. We don't all speak and understand the same languages and our awareness of these differences allows us to improve our team communication, connection, and community.

Introduction to the High Scope Curriculum

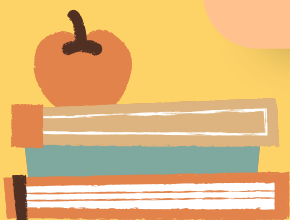
Learn the basics about all sections of the Wheel of Active Learning; Child/Adult Interaction, Active Learning, Learning Environment, Daily Routine, and Assessment.



Sensory Activities in the Early Childhood Classroom



Learn unique recipes that will engage more than one sense at a time. Sensory activities involve different textures, smells, bright colors, different sounds etc. They stimulate senses and encourage children to explore the environment around them.



Early Childhood Classroom Learning Environment

From design to arrangement this workshop covers it all. Learn why certain learning areas need to be close to others and what materials are necessary for them to be stocked with!

More than Mother Goose-s Nursery Rhymes in the Classroom

Explore the many extensions of nursery rhymes in your classroom. Learn how to incorporate hands-on experiences that focus on various nursery rhymes, leave the workshop with concrete lesson plan ideas ready to implement the next school day.



Transitions that Works!



Transitions aren't just used to move children from one place to another. Transitions are time fillers, behavior settlers, and nap time quiet keepers. Join us to receive hands-on activities that work!

Characteristics of a Classroom Leader

While we are commonly referred to as classroom teachers, the truth is that we are classroom leaders. There are precious, tiny humans watching and following in our footsteps. What does it mean then, to lead in the classroom? What attitudes and character qualities are required to truly lead children in learning, discovery, and development in our classrooms? This session will set the stage for you to confidently step into your role as Classroom Leader.

